



夹紧气缸 DL63 - 专利

Pneumatic clamp DL63 - Patented

主要特点:

- 钢制壳体
- 曲柄连杆原理
- 顶部检测销以验证终端位置
- 外部硬限位
- 多功能钢制夹臂
- 4 个安装面 (正面, 背面 和侧面)
- 气缸缸径: 63 mm
- 3 个气源接口 G1/4"
- P+F 电感式限位开关 (连接 M12x1)
- 带手动机构

Main characteristics:

- Steel flanks
- Toggle action mechanism
- Checking pin for verifying the end position
- External arm hard stop
- Versatile steel arms 4 mounting areas (front, back, and on the sides)
- Pneumatic cylinder bore: 63 mm
- 3 feeding ports G1/4"
- Inductive proximity switch P+F (connection M12x1)
- Hand lever



[PDF](#)



[3D Step](#)



[Index](#)

索引.

Index.

页码 Page	描述 Description	
1	主要特点 Main characteristics	
2	订货举例 Ordering example	
3	尺寸页码 Dimensional page	DL63-A1C
4		DL63-A2C
5		DL63-B1C
6		DL63-B2C
7		DLM63-A1C
8		DLM63-A2C
9		DLM63-B1C
10		DLM63-B2C
11	图表 Diagrams	
12	电感式限位开关示意图 / 气路图 Diagram for inductive proximity switch / Pneumatic plan	
13	备件 / Spare parts	
14	备注 / Notes	



订货举例.

Ordering example.

DL63 - LD - A1C - I - 75

产品类型和气缸缸径:
Model and cylinder bore:

DL63
DL 标准夹紧气缸
standard clamp DL

DLM63
DL 标准夹紧气缸
带手动机构
standard clamp DL
with manual control position



接近开关:
Proximity switch:

X: 无接近开关
without proximity switch

I: 电感式接近开关
inductive



手柄位置:
Hand lever position:

LD: 手柄在右侧
right level

LS: 手柄在左侧
left level



打开角度不可调节:
Non adjustable opening angle:

A1	45°	60°	75°	90°
B1	45°	60°	75°	90°
A2	45°	60°	70°	---
B2	45°	60°	70°	---

夹臂类型:
Type of arm:

XXX: 无夹臂
without arm

A1C: A1 中间夹臂 (请参见第 3 页)
arm A1 central (see page 3)

A2C: A2 中间夹臂 (请参见第 4 页)
arm A2 central (see page 4)

B1C: B1 中间夹臂 (请参见第 5 页)
arm B1 central (see page 5)

B2C: B2 中间夹臂 (请参见第 6 页)
arm B2 central (see page 6)

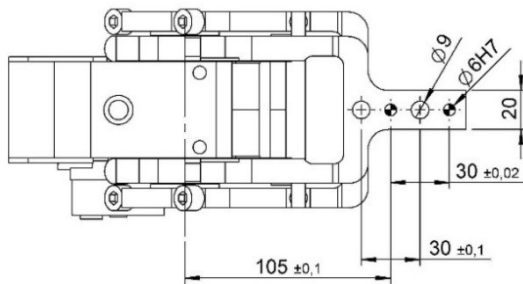
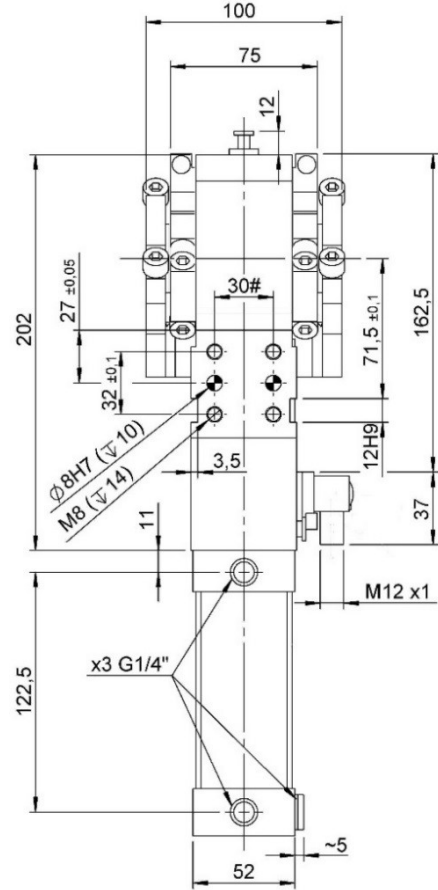
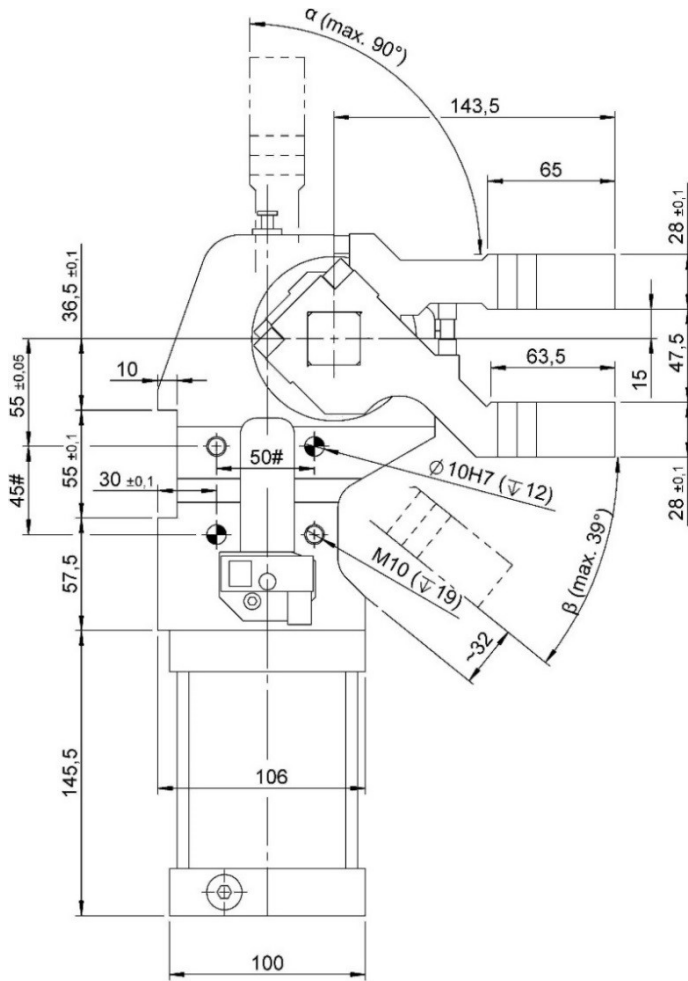


请注意: 可以通过调整夹臂安装方向把 A1/2C 夹臂变成 B1/2C 夹臂.
NOTE: It's possible to transform the clamp type A1/2C into the type B1/2C simply changing the arm position.



DL63-A1C...

夹紧气缸, D.63, 双夹臂, 垂直安装, 夹臂高度 15 (A1)
Clamp, D.63, Double Arm, Vertical, Offset 15 (A1)



可以通过调整夹臂安装方向把A1/2C夹臂变成B1/2C夹臂.

It's possible to transform the clamp type A1/2C into the type B1/2C simply changing the arm position.

#公差: 定位销孔 ±0.02, 螺纹孔 ±0.1

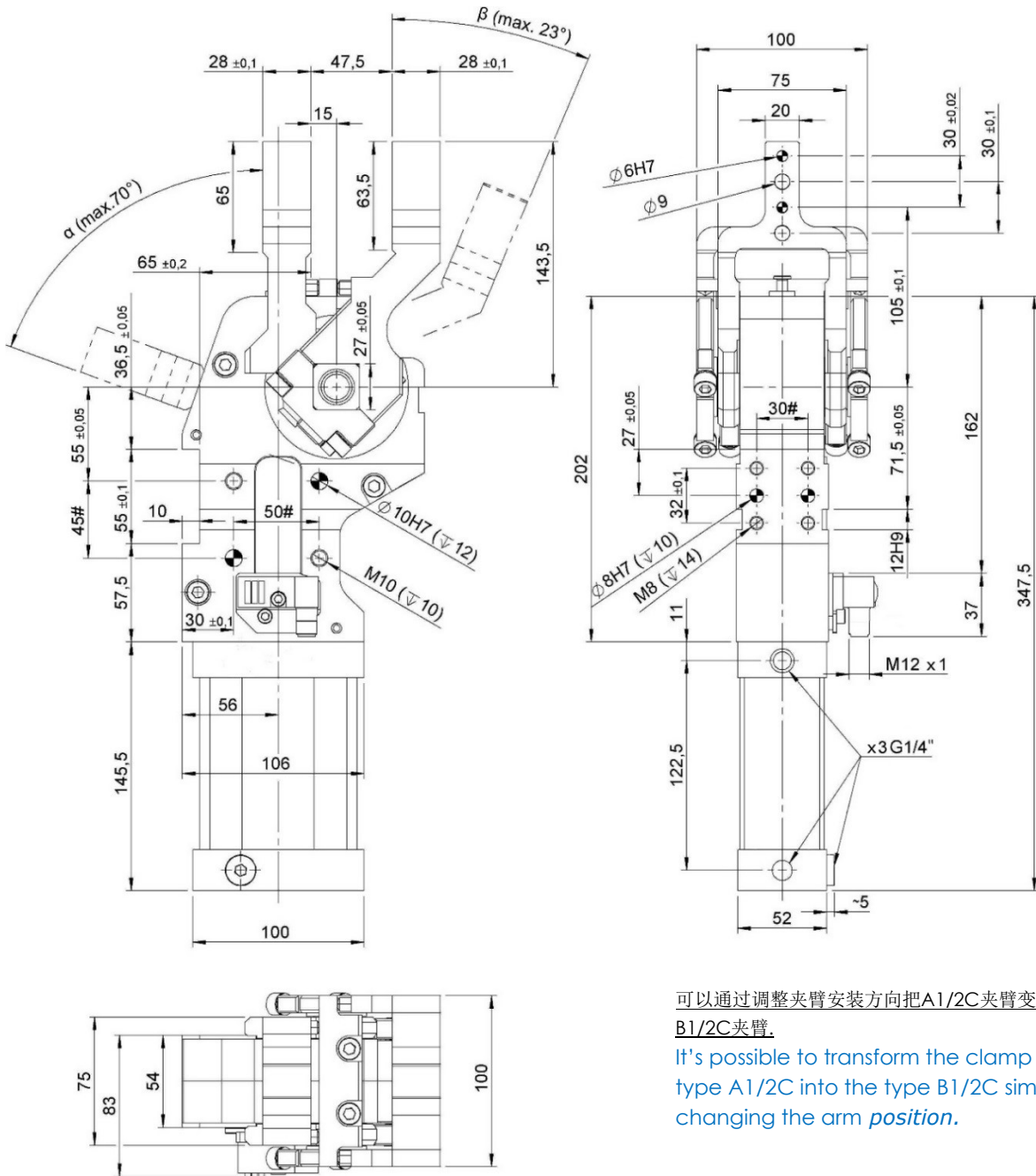
#Tolerances: dowel holes ±0.02, screw holes ±0.1

类型 Type	打开角度 (α) Opening angle (α)	打开角度 (β) Opening angle (β)	缸径 Cylinder bore	保持力 Holding moment	重量 Weight	工作气压 Working pressure	最大夹紧扭矩 (5 bar) Clamping max. torque (5 bar)	耗气量 (5 bar) Air consumption (5 bar)
	[°]	[°]						
DL63-A1C	45°	7°	63	600	~ 10,0	2-8	400	~ 2,6
DL63-A1C	60°	16°						
DL63-A1C	75°	27°						
DL63-A1C	90°	39°						



DL63-A2C...

夹紧气缸, D.63, 双夹臂, 水平安装, 夹臂高度 15 (A2C)
Clamp, D.63, Double Arm, Horizontal, Offset 15 (A2C)



可以通过调整夹臂安装方向把A1/2C夹臂变成B1/2C夹臂。

It's possible to transform the clamp type A1/2C into the type B1/2C simply changing the arm position.

#公差: 定位销径 ±0.02, 螺纹孔 ±0.1

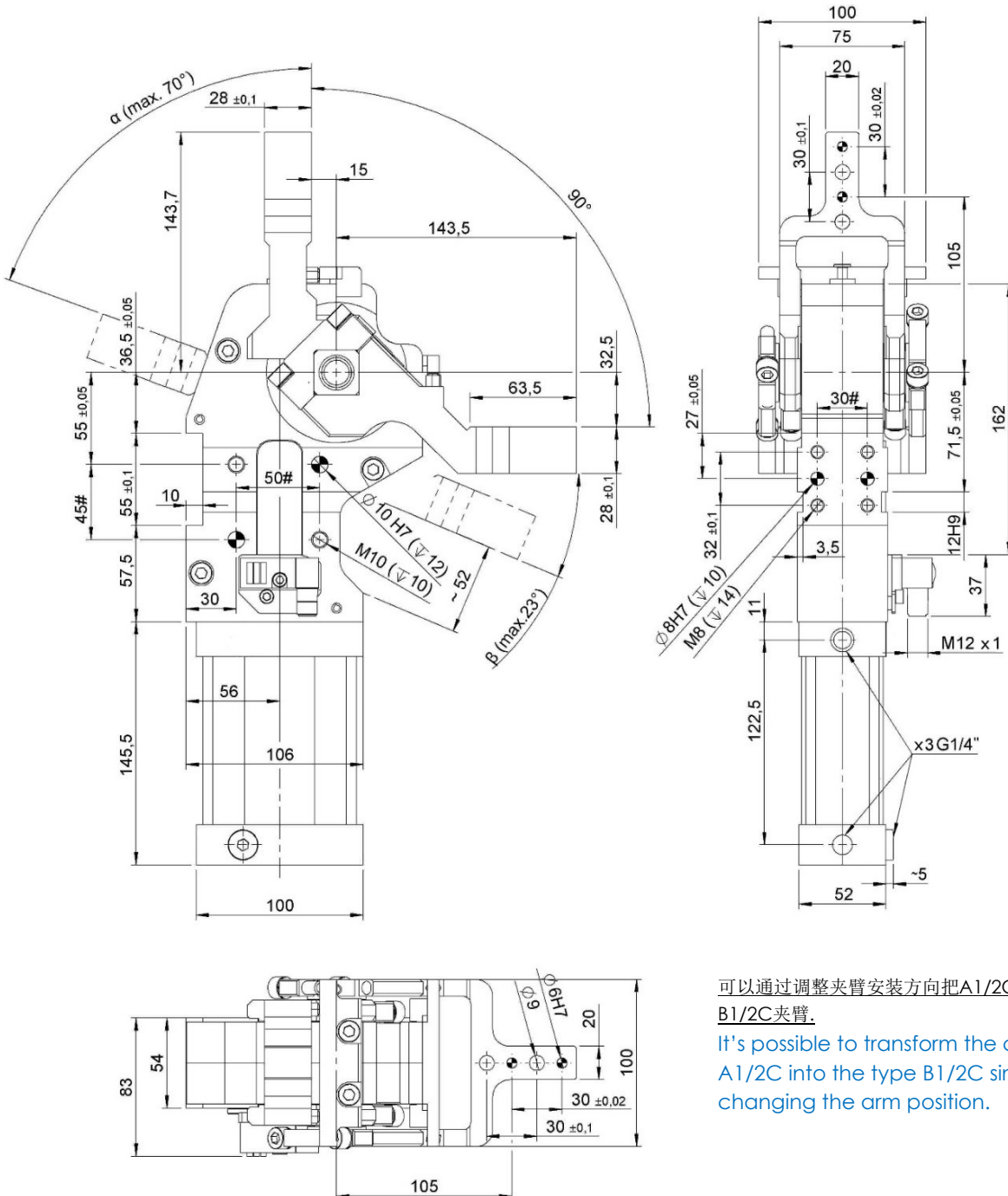
#Tolerances: dowel holes ±0.02, screw holes ±0.1

类型 Type	打开角度 (α) Opening angle (α)	打开角度 (β) Opening angle (β)	缸径 Cylinder bore	保持力 Holding moment	重量 Weight	工作气压 Working pressure	最大夹紧扭矩 (5 bar) Clamping max. torque (5 bar)	耗气量 (5 bar) Air consumption (5 bar)
	[°]	[°]	[mm]	[Nm]	[Kg]	[bar]	[Nm]	[l]
DL63-A2C	45°	7°	63	600	~ 10,0	2-8	400	~ 2,6
DL63-A2C	60°	16°						
DL63-A2C	70°	23°						



DL63-B2C...

夹紧气缸, D.63, 双夹臂, 水平安装和垂直安装, 夹臂高度 15 (B2C)
Clamp, D.63, Double Arm, Horiz. + Vert., Offset 15 (B2C)



#公差: 定位销孔 ±0.02, 螺孔 ±0.1

#Tolerances: dowel holes ±0.02, screw holes ±0.1

可以通过调整夹臂安装方向把A1/2C夹臂变成B1/2C夹臂.

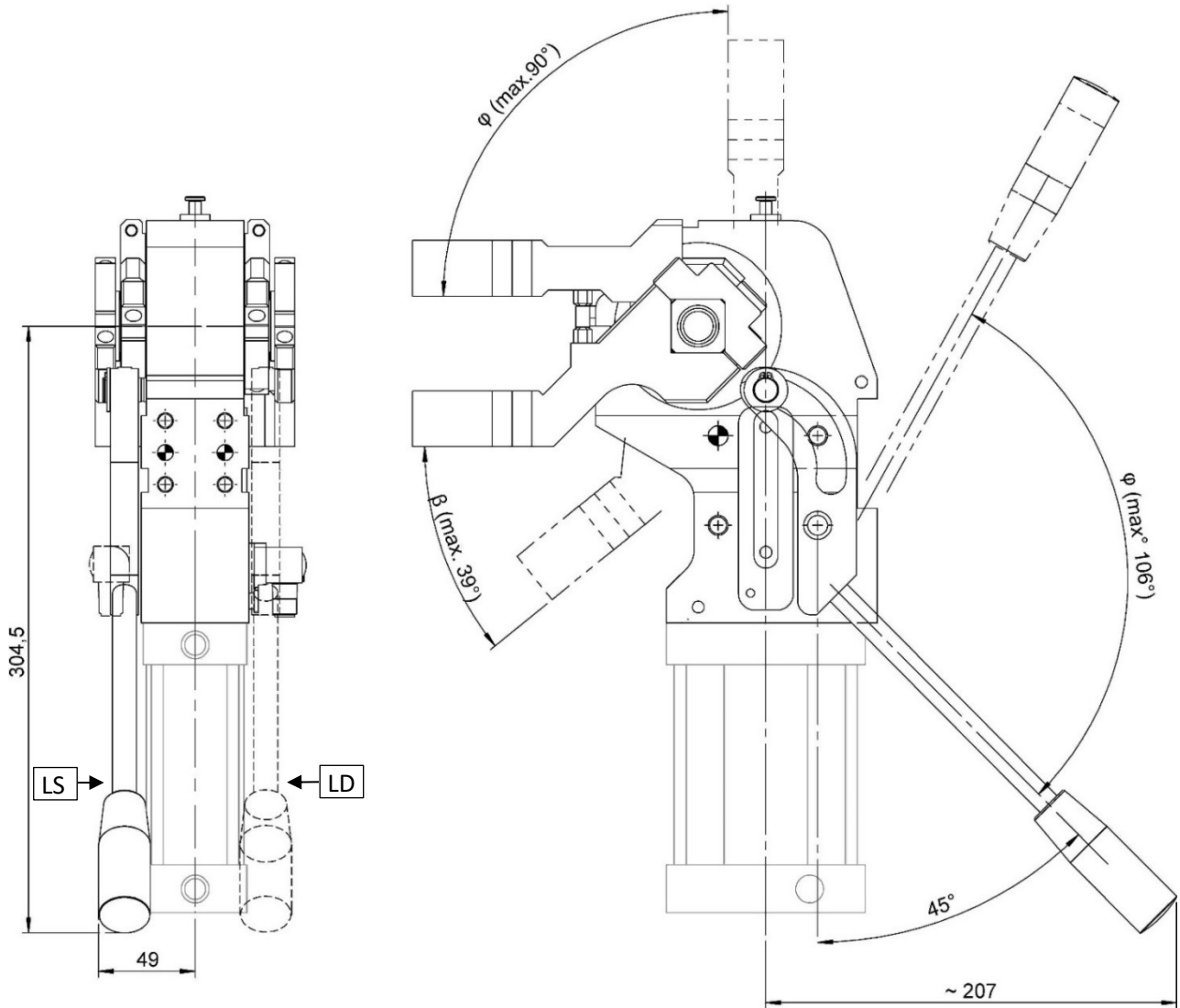
It's possible to transform the clamp type A1/2C into the type B1/2C simply changing the arm position.

类型 Type	打开角度 (α) Opening angle (α)	打开角度 (β) Opening angle (β)	缸径 Cylinder bore	保持力 Holding moment	重量 Weight	工作气压 Working pressure	最大夹紧扭矩 (5 bar) Clamping max. torque (5 bar)	耗气量 (5 bar) Air consumption (5 bar)
	[°]	[°]	[mm]	[Nm]	[Kg]	[bar]	[Nm]	[l]
DL63-B2C	45°	7°	63	600	~ 10,0	2-8	400	~ 2,6
DL63-B2C	60°	16°						
DL63-B2C	70°	23°						



DLM-A1C...

夹紧气缸, D.63, 双夹臂, 带手动机构, 垂直安装, 夹臂高度 15 (A1C)
Clamp, D.63, Double Arm, Hand Lever, Vert., Offset 15 (A1C)



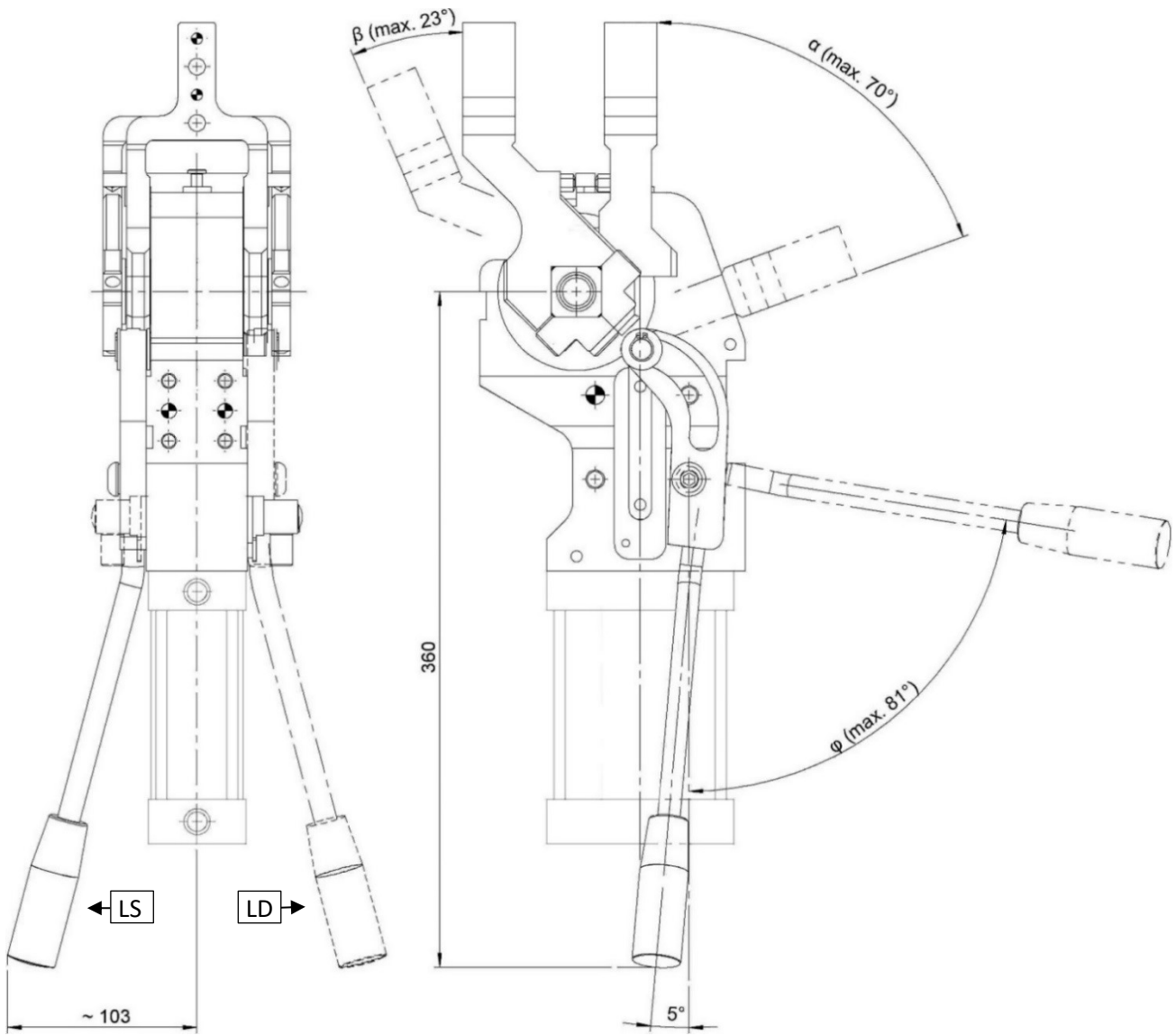
α	45°	60°	75°	90°
β	7°	16°	27°	39°
ϕ	56°	70	87°	106°

类型 Type	缸径 Cylinder bore	保持力 Holding moment	重量 Weight	工作压力 Working pressure	耗气量(5 bar) Air consumption (5 bar)	最大手动施力 Max. manual force
	[mm]	[Nm]	[Kg]	[bar]	[l]	[N]
DLM-A1C	63	600	~ 10,5	2 - 8	2,6	150



DLM-A2C...

夹紧气缸, D.63, 双夹臂, 带手动机构, 水平安装, 夹臂高度 15 (A2C)
Clamp, D.63, Double Arm, Hand Lever, Horiz., Offset 15 (A2C)



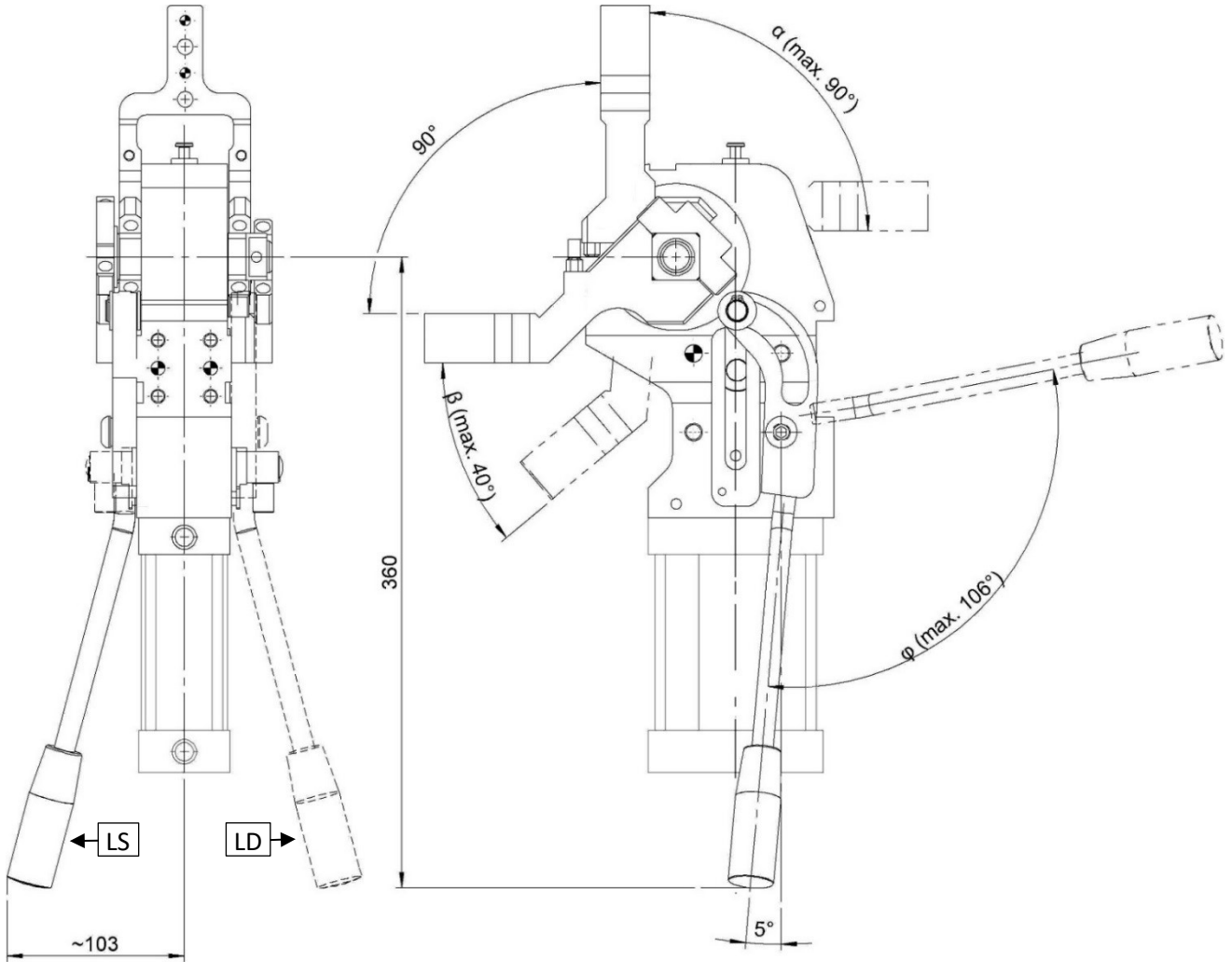
α	45°	60°	70°
β	7°	16°	23°
φ	56°	70	81°

类型 Type	缸径 Cylinder bore	保持力 Holding moment	重量 Weight	工作气压 Working pressure	耗气量 (5bar) Air consumption (5 bar)	最大手动施力 Max. manual force
	[mm]	[Nm]	[Kg]	[bar]	[l]	[N]
DLM-A2C	63	600	~ 10,5	2 – 8	2,6	150



DLM-B1C...

夹紧气缸, D.63, 双夹臂, 带手动机构, 水平对称安装和垂直安装, 夹臂高度 15 (B1C)
 Clamp, D.63, Double Arm, Hand Lever, Horiz. Sym.+Vert., Offset 15 (B1C)



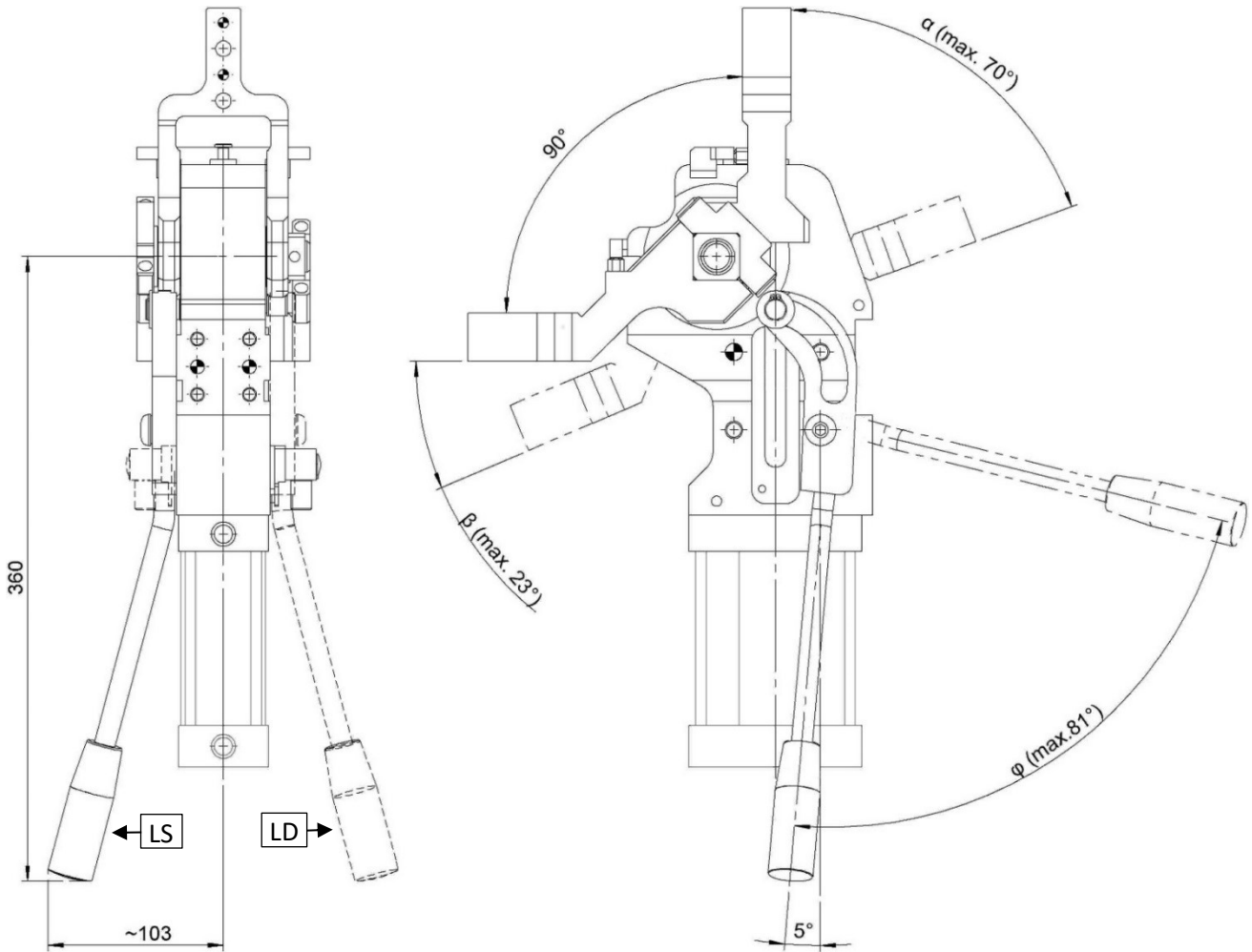
α	45°	60°	75°	90°
β	7°	16°	27°	39°
φ	56°	70	87°	106°

类型 Type	缸径 Cylinder bore	保持力 Holding moment	重量 Weight	工作气压 Working pressure	耗气量(5 bar) Air Consumption (5 bar)	最大手动施力 Max. manual force
	[mm]	[Nm]	[Kg]	[bar]	[l]	[N]
DLM-B1C	63	600	~ 10,5	2 - 8	2,6	150



DLM-B2C...

夹紧气缸, D.63, 双夹臂, 带手动机构, 水平和垂直安装, 夹臂高度 15 (B2C)
Clamp, D.63, Double Arm, Hand Lever, Horiz. + Vert., Offset 15 (B2C)



α	45°	60°	70°
β	7°	16°	23°
ϕ	56°	70	81°

类型 Type	缸径 Cylinder bore	保持力 Holding moment	重量 Weight	工作气压 Working pressure	耗气量(5 bar) Air consumption (5 bar)	最大手动施力 Max. manual force
	[mm]	[Nm]	[Kg]	[bar]	[l]	[N]
DLM-B2C	63	600	~ 10,5	2 – 8	2,6	150

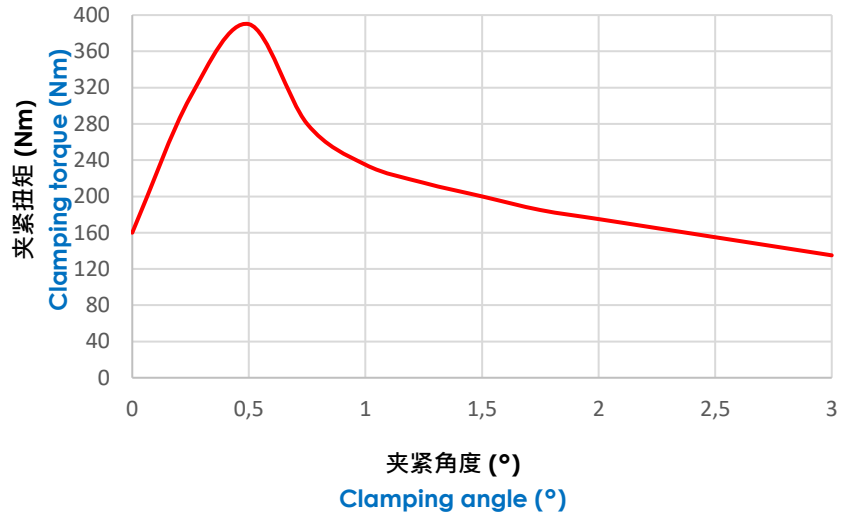


图表.

Diagrams.

夹紧扭矩 (Nm).

Clamping torque (Nm).

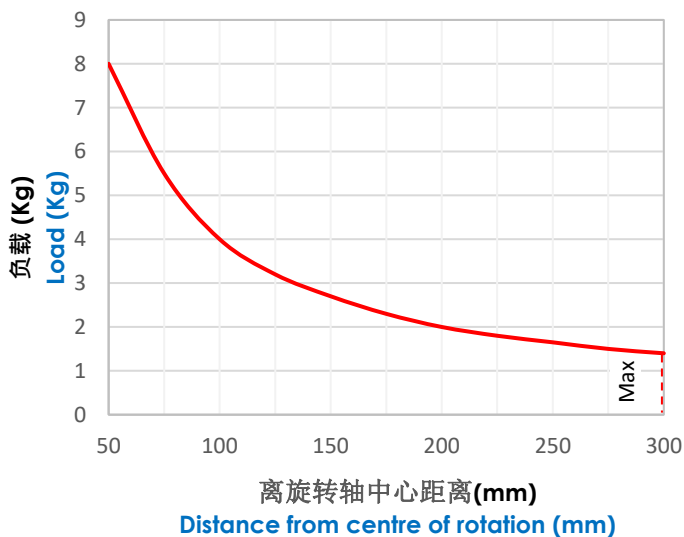


最大夹紧扭矩 (5 bar): **400 Nm.**

Max. clamping torque (5 bar): **400 Nm.**

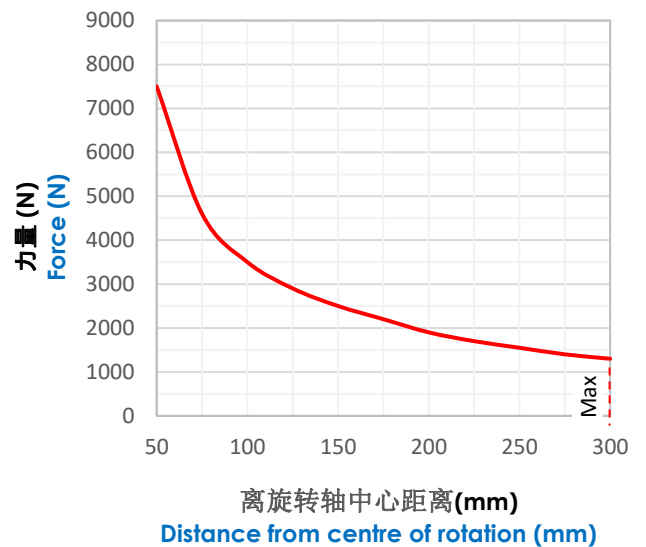
夹臂最大负载 (Kg).

Max. load applicable on the arm (Kg).



夹臂最大施力 (N).

Max. force applied (N).



最大重量扭矩 (5 bar): **4Nm.**

Max. torque by weight (5 bar): **4Nm.**

最大偏心力矩相对于 **3 Nm.**

The maximal load by torque for the applications with block out of axis is **3 Nm.**



电感式限位开关示意图 (代号 05830/B/C).

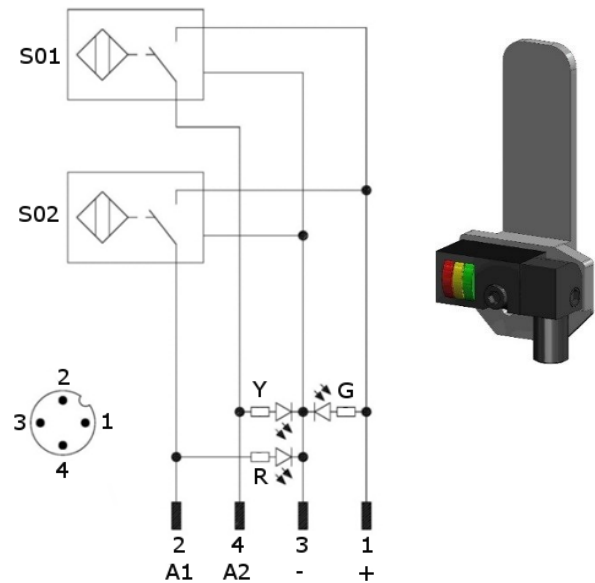
Diagram for Inductive proximity switch (cod. 05830/B/C).

技术参数 (P+F):

- 输出类型: PNP;
- 输入电压: 10-30 VDC;
- 最大换向电流: 200 mA;
- 电源供应: < 20 mA;
- 电压差: < 1,8 V
- 工作气压: -25° / 70° C.

Technical data (P+F):

- Output type: PNP;
- Feeding voltage: 10-30 VDC;
- Max. commutating current: 200 mA;
- Power supply: < 20 mA;
- Voltage drop: < 1,8 V;
- Temperature range: -25° / 70° C.



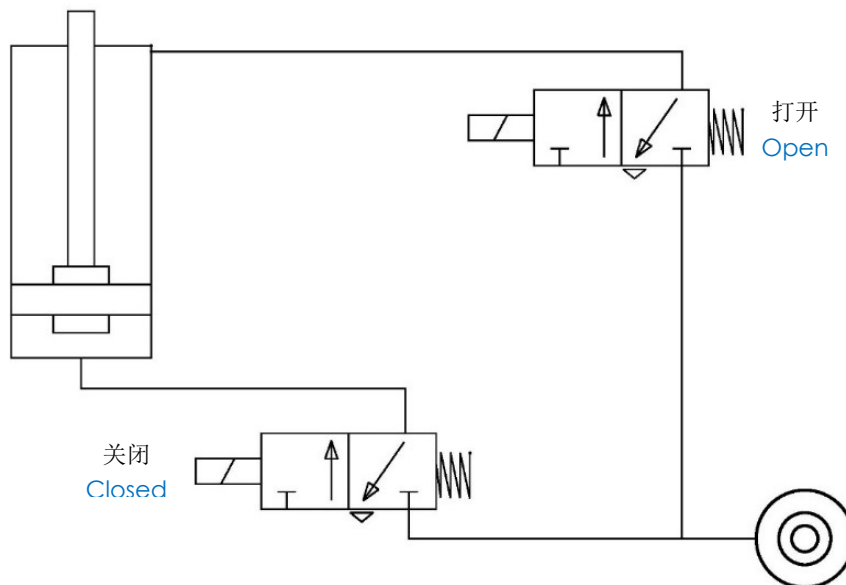
S01 = 打开信号
S01 = opening signal
S02 = 关闭信号
S02 = closing signal

Y = 黄色 LED / yellow LED
G = 绿色 LED / green LED
R = 红色 LED / red LED

1 = 棕色系 / brown wire
2 = 黑色线 / black wire
3 = 蓝色线 / blue wire
4 = 白色线 / white wire

气路图.

Pneumatic plan.



工作气压
Working pressure

[bar]

2-8



备件.

Spare parts.

配套元件 # Kit	图片 Picture	描述 Description	代号 Article
上夹臂组装 Upper arm assembly		夹臂 A1/2C 和 B1/2C Arm type A1/2C and B1/2C	06336/C
下夹臂组装 Inferior arm assembly		夹臂 A1/2C e B1/2C Arm type A1/2C and B1/2C	06241/C
外部限位块 External stop		外部限位块 External stop	06252/C
接近开关 Proximity switch		电感式接近开关 P+F Inductive proximity switch P+F	05830/B/C
行程限位块 Stroke limiter		用于调整角度的行程限位块 Stroke limiter for opening angle adjustment	06491/45
			06491/60
			06491/70
			06491/75
			06491/90
密封套装 Seals kit		DL63气缸密封组件 Seal components for pneumatic cylinder DL63	SCR-CIL63V
气缸 Pneumatic cylinder		完整气缸缸径 63 mm Complete pneumatic cylinder bore 63 mm	06243/C

.....

.....

.....

.....

.....

.....



本目录取消并替换了以前的目录。我们保留在没有任何通知的情况下进行添加或更改的权利。目录中的产品为标准产品；对特殊应用的任何请求都由技术/商务部门进行评估。本目录文档均属 VEP Automation S.r.l. 所有。未经授权许可，禁止任何形式的复制。

This catalogue cancels and replaces the previous ones. We reserve the right to make additions or changes without any notice. The products in the catalogue are standard; any enquiry of special applications is evaluated by technical/sales department. The complete documentation belongs to VEP Automation S.r.l. and without permission any kind of reproduction is forbidden.

VEP Automation Headquarters

VEP Automation S.r.l

Via San Felice, 37
10092 Beinasco – Torino (Italy)
Tel. +39 011 3972572
Email: info@vepautomation.it
Web: www.vepautomation.it

VEP Automation Germany

VEP Automation GmbH

Fritz Liebsch Str. 29
D 26723 Emden (Germany)
Tel. +49 04921 450758
Email: info@vepautomation.de
Web: www.vepautomation.de

VEP Automation America

VEP Automation S.A.

Av. Toluca 373 M Col. Olivar de los
Padres Del. Álvaro Obregón
01780 CDMX – (Ciudad de México)
Tel. +52 55 1718 0929
Email: info@vepautomation.mx
Web: www.vepautomation.mx

VEP Automation China

维亿普自动化（苏州）有限公司

地址：中国江苏省苏州市吴中区木渎镇
木东路 317 号（联东 U 谷）1 幢 401 室
Room 401, Building No 1, No 317, mudong Road,
Wuzhong, mudu District, Suzhou City (China)
电话: +86 512 6729 2226
邮箱: info@vepautomation.cn
网址: www.vepautomation.cn